

# HOTAP

Hot water on demand

For home & office  
Hot water on demand



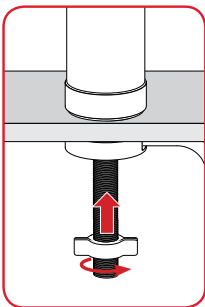
Electric cable  
included



Washing the dishes after lunch break is not an issue anymore with  
**HOTAP instant unlimited hot water at your office.**

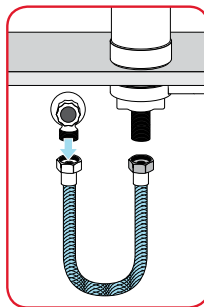
It's so easy to install - plug & use anywhere you want in just 3 simple steps!  
Requires only cold water inlet and electrical outlet

1



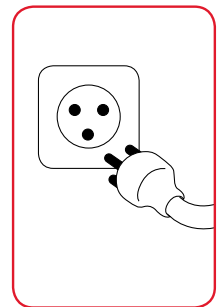
**Place** HOTAP over the tap hole and tighten mounting nut to secure the faucet

2



**Connect** to cold water inlet using the HOTAP water inlet hose

3



**Plug** the electric cable into the power outlet

**And you're ready to enjoy instant unlimited hot water!**

Available in: ☐ White ☒ Black ☐ Chrome ☐ Brushed nickel



**ATMOR**  
Hot Water On Demand  
[www.atmor.net](http://www.atmor.net)



# HOTAP

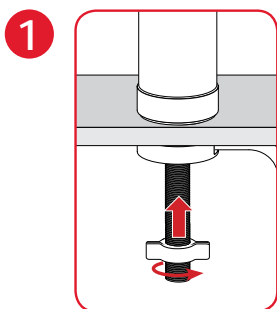
Hot water on demand



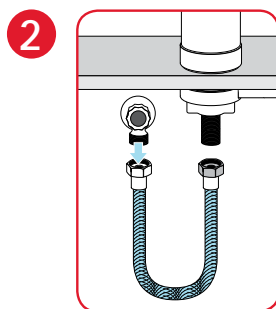
For office  
Hot water on demand

Hot water in the office bathroom is quite a treat with  
**HOTAP instant unlimited hot water at your office.**

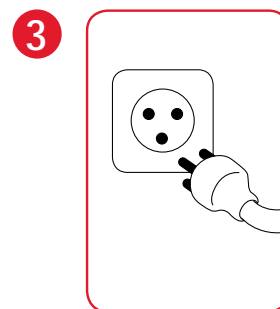
It's so easy to install - plug & use anywhere you want in just 3 simple steps!  
Requires only cold water inlet and electrical outlet



**Place** HOTAP over the tap hole and tighten mounting nut to secure the faucet



**Connect** to cold water inlet using the HOTAP water inlet hose



**Plug** the electric cable into the power outlet

**And you're ready to enjoy instant unlimited hot water at your office!**

Available in:  White  Black  Chrome  Brushed nickel



**ATMOR**  
Hot Water On Demand  
[www.atmor.net](http://www.atmor.net)



# HOTAP

Hot water on demand

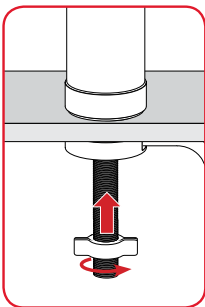


For home & garden  
Hot water on demand

Having friends for barbeque can be so much fun with  
**HOTAP instant unlimited hot water at your home and garden.**

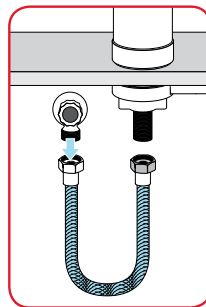
It's so easy to install - plug & use anywhere you want in just 3 simple steps!  
Requires only cold water inlet and electrical outlet

1



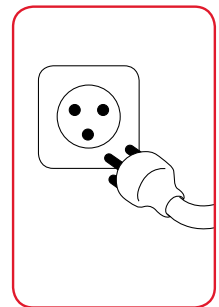
**Place** HOTAP over the tap hole and tighten mounting nut to secure the faucet

2



**Connect** to cold water inlet using the HOTAP water inlet hose

3



**Plug** the electric cable into the power outlet

**And you're ready to enjoy instant unlimited hot water at your home!**

Available in:  Brushed nickel  White



**ATMOR**  
Hot Water On Demand  
[www.atmor.net](http://www.atmor.net)

