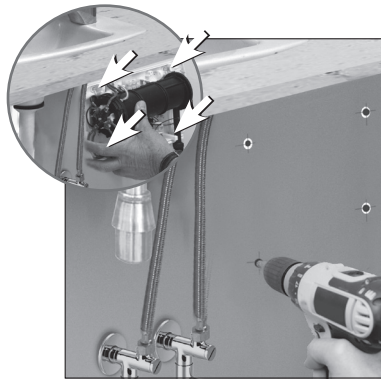


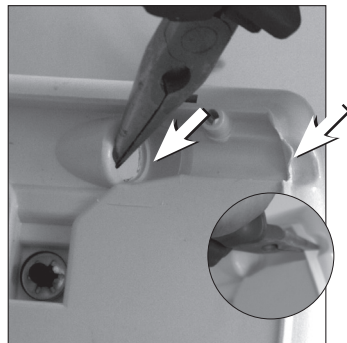
Step 1

Find the optimal place.
Drill 4 holes and insert Plugs.



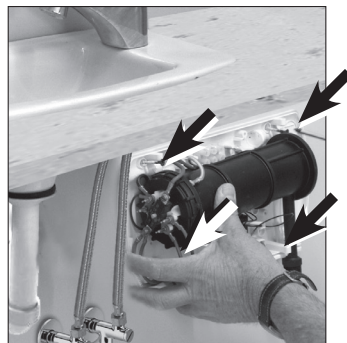
Step 2

Open the entrance cable in the back of the unit.
Be sure to open the side of the cable



Step 3

Hang the unit on the wall by 4 screws.
Don't forget to inset the electric cable before.



Step 4

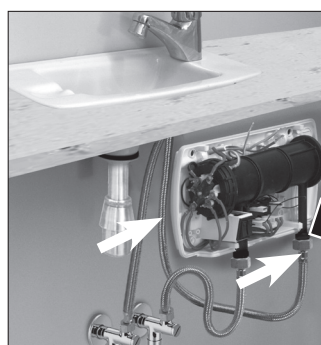
Connect the Cold water hose to the inlet on the left side of the unit.
(Don't forget to insert rubbers).
Be sure to use reinforced hose.
Be sure to close it properly.



Step 5

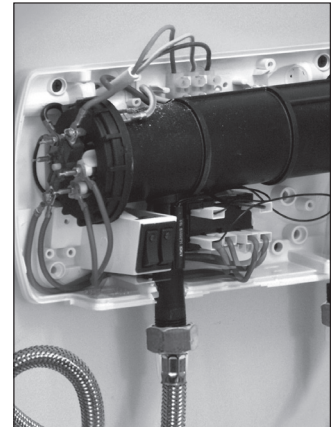
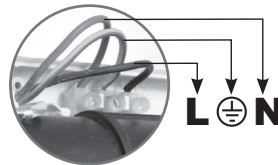
Connect the Hot water hose to the outlet (Don't forget the rubbers).
Be sure to use reinforced hose.
Be sure to close it well.
Open the water supply and check for leakage around the hoses.
If there is no leakage - Go to step 6

**If there is leakage, find the leakage point and fix it.
Check again.
Don't continue unless you are sure there is no leakage.**



Step 6

Connect the electric cable to the Terminal block.



Step 7

Close the cover by 4 short screws

After closing the screws
Insert the Gray Bottom cover

