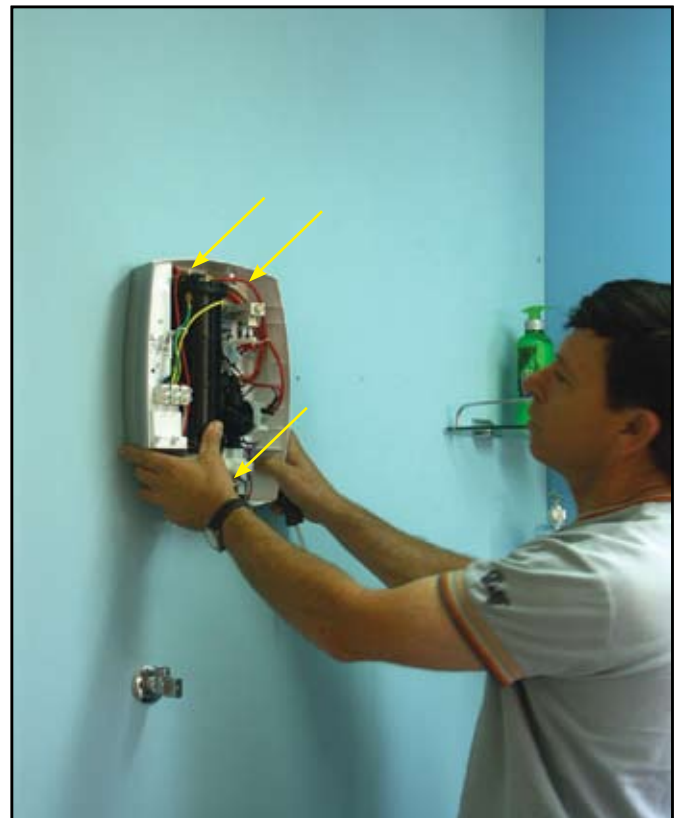


Step 1



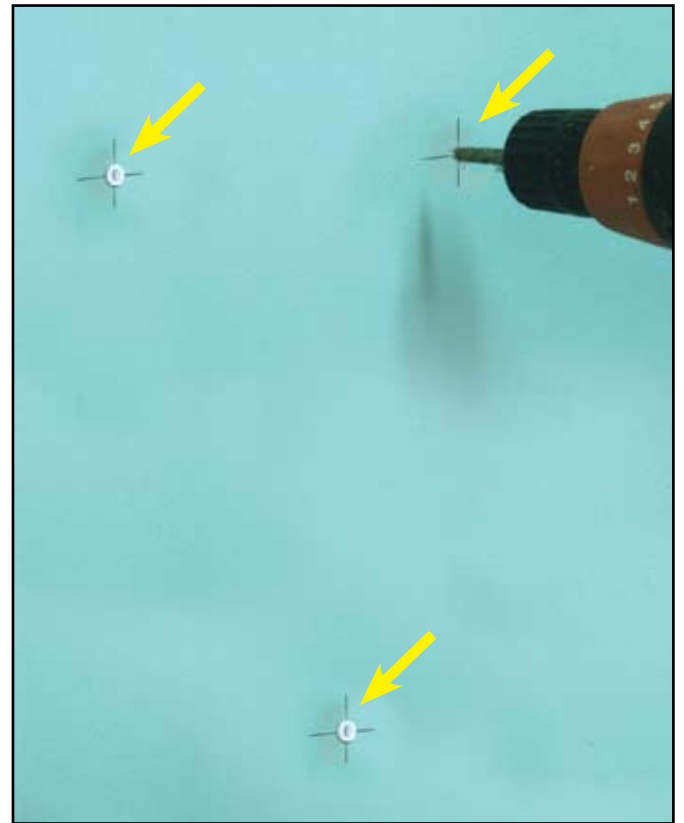
Step 2

Find The Place - Eye Level
and Sign 3 screws place



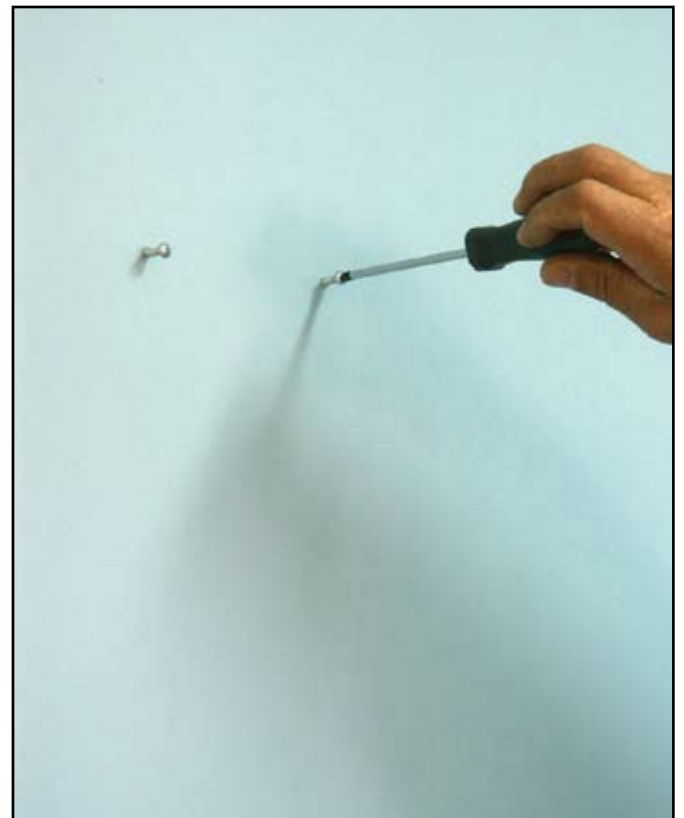
Step 3

Drilling 3 holes
and inserting 3 plugs



Step 4

Inserting 2 top screws



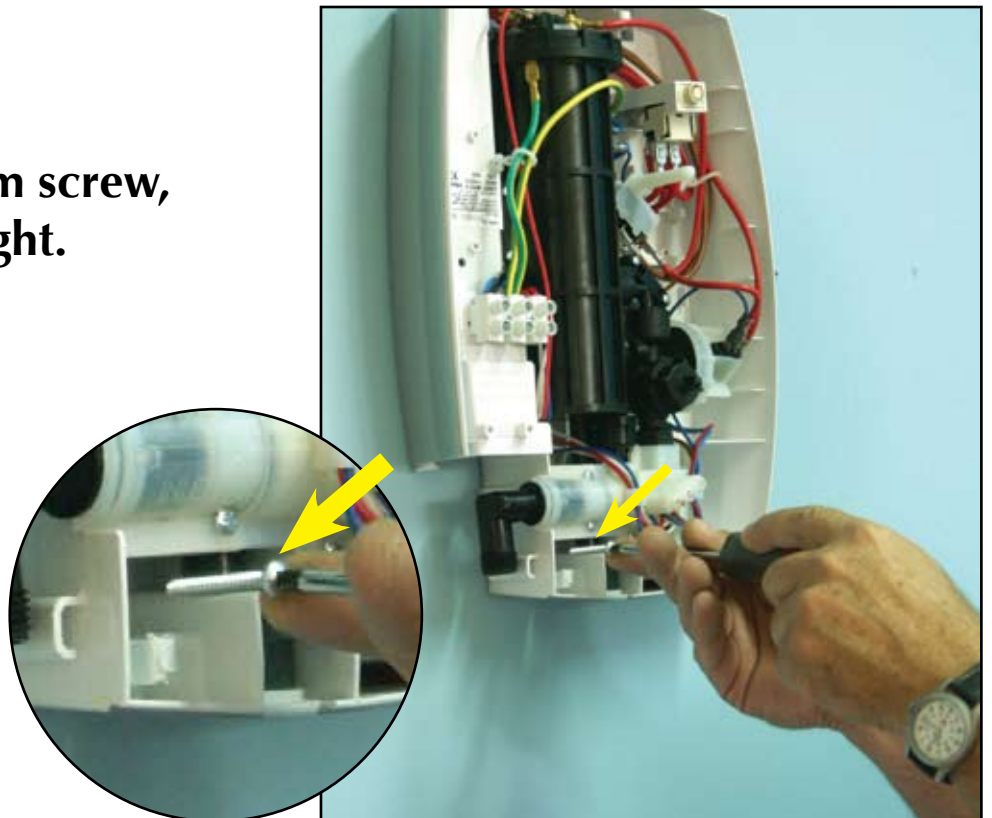
Step 5

Hang the unit on the 2 top screws



Step 6

Insert the third bottom screw, keeping the unit straight.



Step 7

Connect the Reinforced hose to the water supply (don't forget to insert the rubbers).



Step 8

Connect the second end of the reinforced hose to the inlet water connector of the unit. (on the left side).



3 Way inlet hose possibility:

1. Top
2. Back
3. Bottom



Step 9

Connect the outlet hose to the outlet connector. (in the middle bottom of the unit)



Step 10

1. Insert the Soap dishes.
2. Insert the hand shower holder.
3. Place the ends of the sliding bar.
4. Place the sliding bar on the wall on right height. (Comfortable height for all the users in the house)
5. Sign the 4 holes.



Step 11

1. Drilling 4 holes - 2 on top and 2 on the bottom.
2. Insert plugs



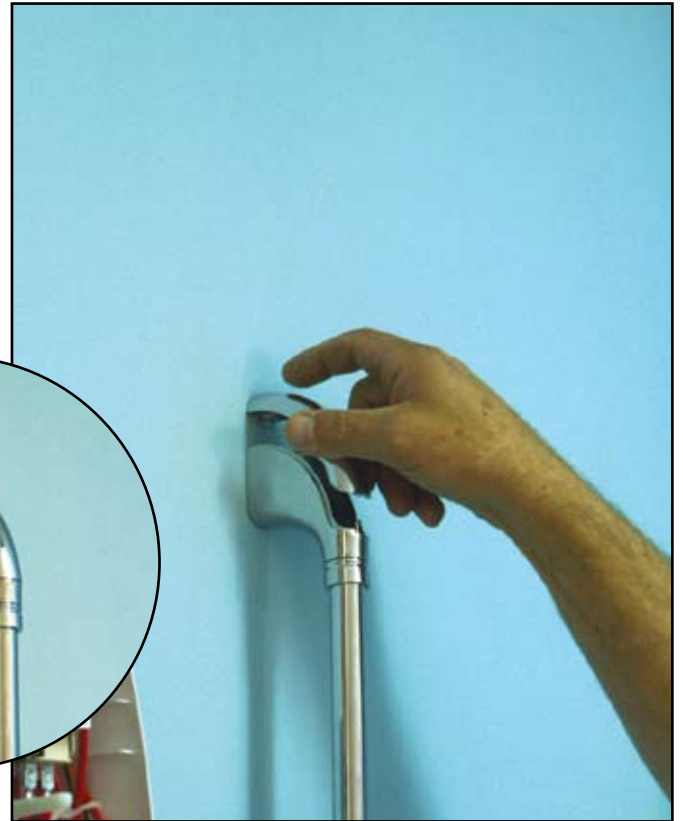
Step 12

Connect the sliding bar to the wall using 4 screws



Step 13

Connect the cover of the Sliding bar ends.



Step 14

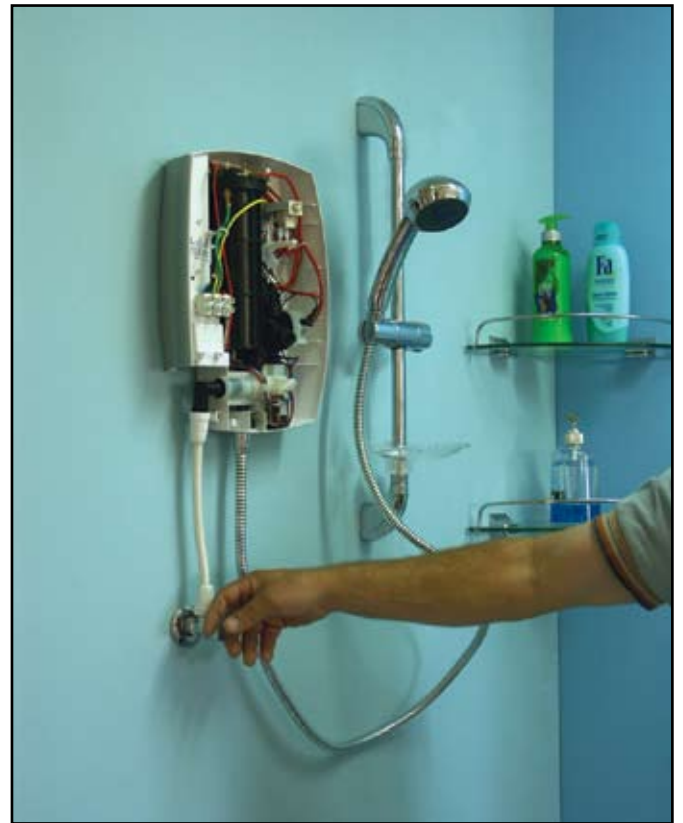
Connect the hand shower to the outlet hose end. (Don't forget the rubber)

Hand it on the sliding bar.



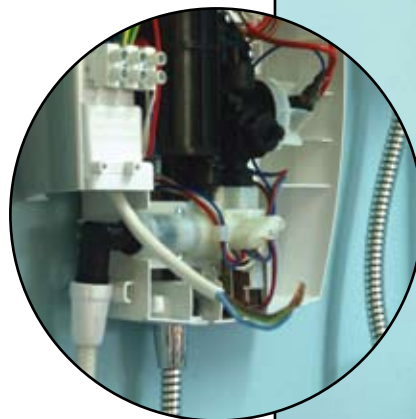
Step 15

Open the water supply and check for leakage.



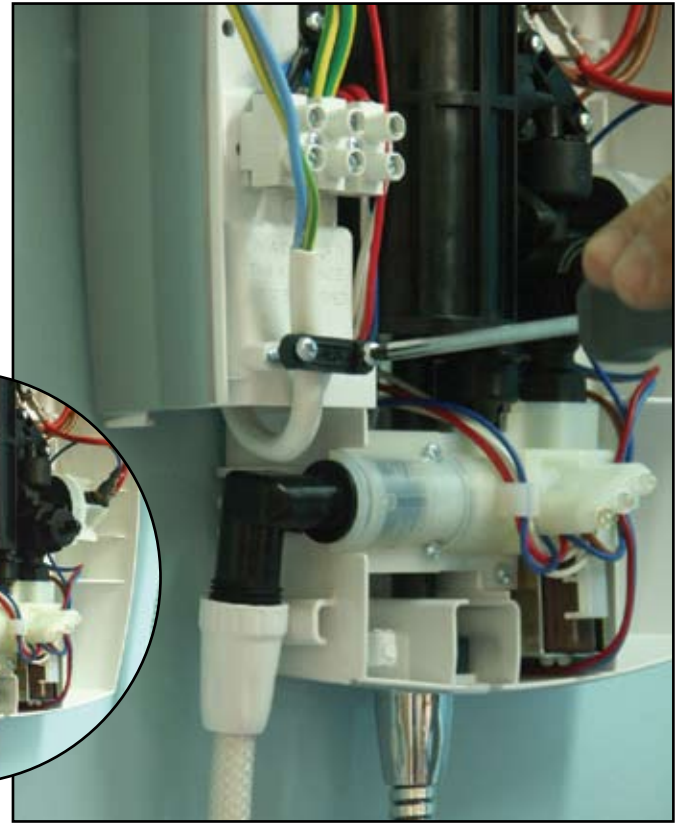
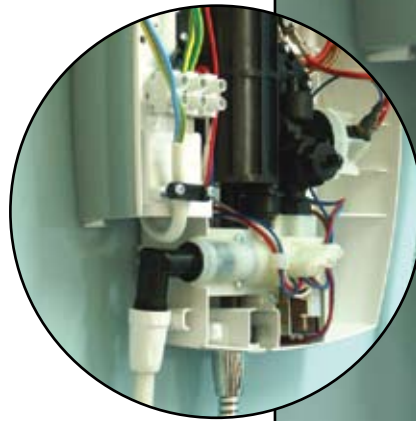
Step 16

Insert the Electric cable through the back of the unit.



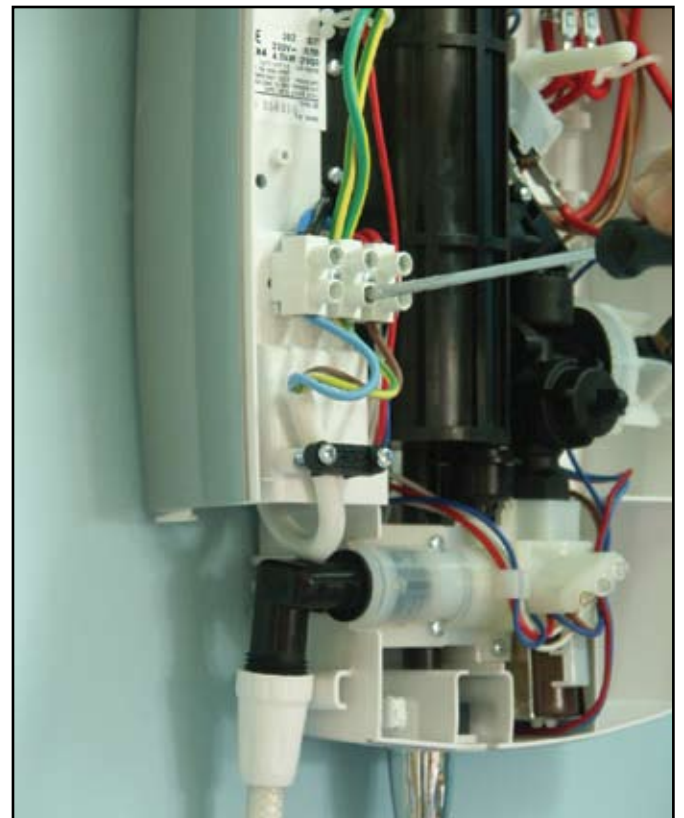
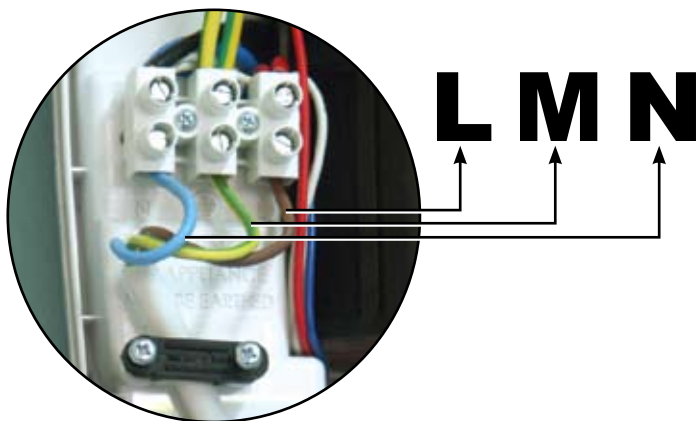
Step 17

Hold the cable with the cable holder.



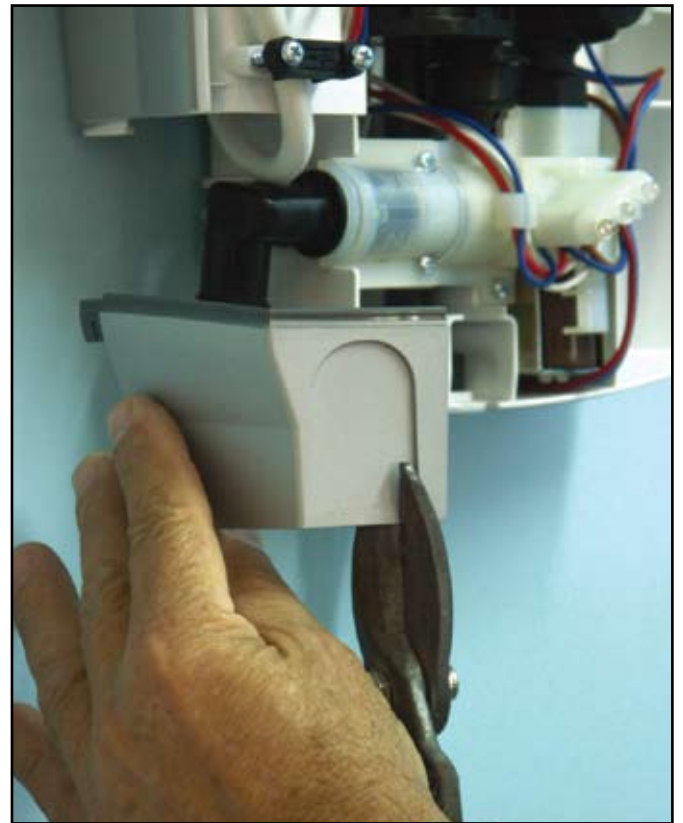
Step 18

Connect the electric cable to the Terminal block.



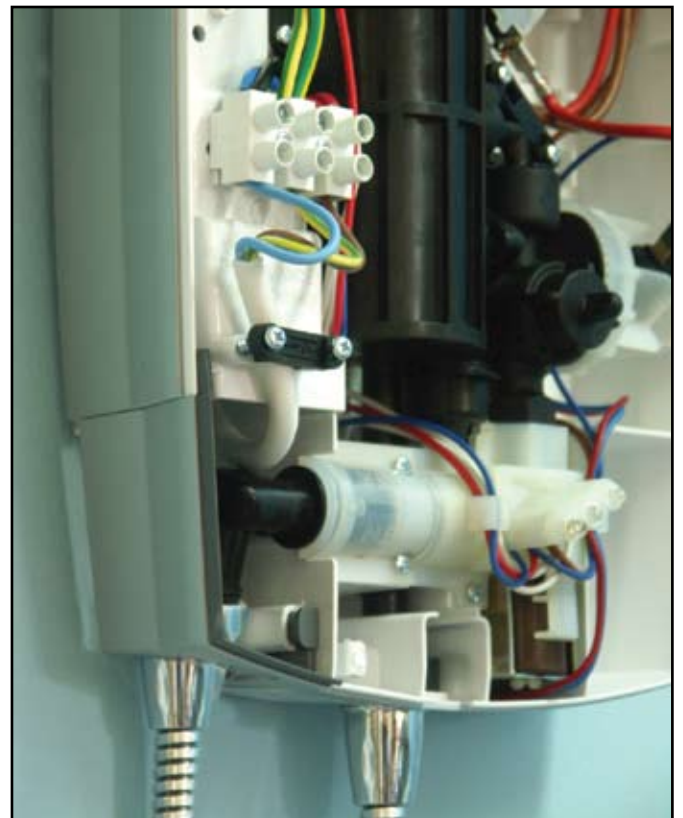
Step 19

Open the Hose entry in the base corner.



Step 20

Connect the corner to the the base of the unit.



Step 21

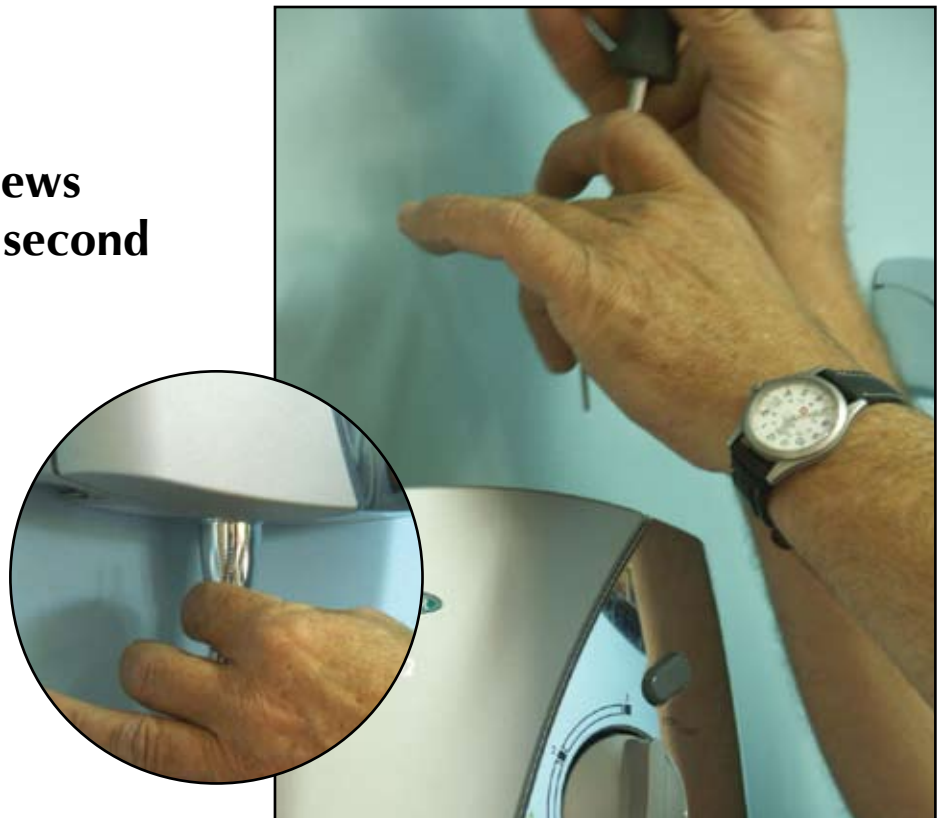
Round the Knobs according to the Facet and Rotering switch Pivot.

Than put the cover of the unit



Step 22

Close the cover by 2 screws
One on the top and the second
on the bottom.



Step 23

Final view

