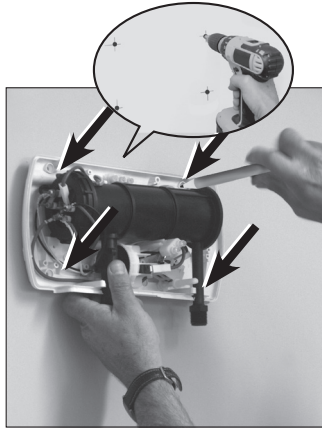


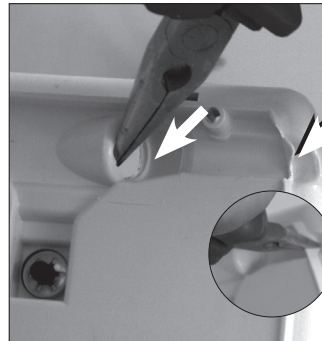
Step 1

Find the optimal place
Drill 4 holes and insert Plugs.



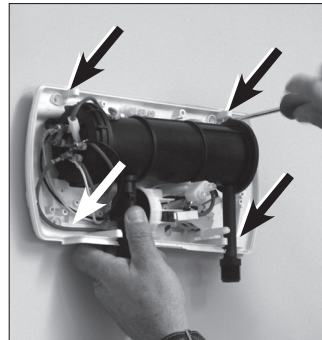
Step 2

Open the entrance cable in the back of the unit.
Be sure to open the side of the cable



Step 3

Hang the unit on the wall by 4 screws.
Don't forget to inset the electric cable before.



Step 4

Connect the Cold water hose to the inlet on the left side of the unit.
(Don't forget to insert rubbers).
Be sure to use reinforced hose.
Be sure to close it well.



Step 5

Connect the outlet hose to the outlet water connector (on the right side) and the Shower hand to the second end (don't forget the rubbers).

Caution: Don't connect any tap to the outlet.

Be sure to close it properly.



Step 6

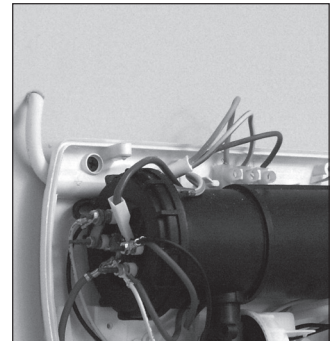
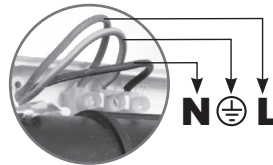
Open the water supply and check for leakage around the hoses.
If there is no leakage - Go to step 7

If there is leakage, Find the leakage point and fix it. Check again. Don't continue unless you are sure there is no leakage.



Step 7

Connect the electric cable to the Terminal block.



Step 8

Round the Knob according to the Rotating switch Pivot.
Put the cover of the unit.

Close the cover by 4 short screws

